



Lemnos Clocks Collection

JAPAN MADE



Lemnos Clocks Collection

JAPAN MADE



Clocks tick and produce spaces, sometimes like graceful flowers and sometimes like brilliant jewels. We look at clocks every day and many times, so we want them to enrich your space.

With this concept, Lemnos works with many well-known designers to design a lot of fine items, which are made with the refined skills of craftsmen who maximize the attractiveness of materials for timeless design. Our innovative Japan-made products are highly reputed and have won many awards in Japan and abroad such as Good Design Award.

We will continue to propose innovative and permanent beauty.



ABOUT THE DESIGNERS



AWATSUJI design

Having been educated at Tama Art University in Japan and the Cranbrook Academy of Art in the U.S., the two sisters established their firm AWATSUJI design in 1995; focusing on graphic design in the beginning their creative portfolio now includes interior items and a series of wall clocks for Lemnos.



Kanaé Tsukamoto

Being educated at the Royal College of Art in London and graduating in 1997, Tsukamoto found her preferred mediums to be glass and porcelain. Besides interior design she also creates tableware and lightning.



Naoki Terada

After graduating from Meiji University (Tokyo) in 1989, Terada made his way to Australia, Italy and London, England. Back in Japan he focused his work on architecture and furniture design opening his own office in 2003.



nendo (Oki Sato)

Born in Canada in 1977, he graduated from Waseda University in 2002 majoring in architecture. Branded as nend, Sato opened his own design offices in Tokyo and in 2005 in Milan, becoming recognized as a designer, a lecturer and an entrepreneur.



PINTO

Pinto design label was formed by Takanori Hikima and Masayoshi Suzuki in 2008. Both graduates from Nihon University they started their creative careers with designing furniture and consumer electronics.



Shin Azumi

Originating from Kansai and born in 1965, Azumi was educated in England and commenced his professional career in London in 2005. Having received numerous design awards in Europe and Japan, one of his biggest successes was the acquisition of his art by the Victoria and Albert Museum.



Takenobu Igarashi

Takenobu Igarashi works as a sculptor and designer. His calendar created for the Museum of Modern Art in New York using axonometric projection made him well-known in the world of graphic design, bolstered by his three dimensional logo types and VI design for Suntory Hall Japan and Calpis Japan, as well as OUN & YMD products.



Yota Kakuda

A student of Shin and Tomoko Azumi in their London design house, and before at famous Royal Art College in London by scholarship of Japanese government, Kakuda worked at Muji manifesting simple design following his principle that his work should make people happy.



Riki Watanabe

Icon amongst all Japanese designers Watanabe is looking back on a creative period of almost 75 years. His Lemnos time pieces date back to the early 70's and are outstanding. Watanabe is recognized for his work all over the world. He died in 2013 at the age of 101 years.



Yoko Dobashi

Chairman of Tokyo designers block 2001, Dobashi was also involved in launching the design brand sputnik which appeared in Milan, London and New York. Her work is strongly influenced by Montessori's principles.



Yuichi Nara

Tokyo born in 1977, Nara was educated in Japan. Strongly influenced by his time in Murano, Italy and Venezia and through his partnership with Frederico Traverso when founding their 241 Design Studio. Returned to Japan, Nara established the Noto design office in Notojima, Ishikawa.





Sand Casting
Haruhiko Hayashi



Surface Finish
Koji Orii
(Certificated Traditional Craftsman)



Shin Azumi

Quaint

Quaint is a wall clock which was inspired by the clock face of an old clock tower. The brass of the clock's dial and outer periphery are exposed by polishing.

AZ15-06

φ250×d36mm / 1,400g / Brass



AZ15-06 SL



AZ15-06 GN



AZ15-06 BK



Shin Azumi

Orb

Orb is a wall clock which draws inspiration from old, tarnished brass instruments such as those used during early voyages and astronomical observations. Thin engravings on the clock face form a dial on the coloured surface, exposing the brass below.

Both clocks emphasize the natural qualities of their materials, using the attractive contrast between the brass and coloured finish to enhance the visibility of the clock face. The distinctive texture is achieved by a process of brass casting that uses traditional colouring techniques originating from Takaoka, Toyama. The rich texture is intended to stand up to walls that have a strong material quality, such as exposed concrete or brick.

AZ15-07

φ180×d42mm / 960g / Brass



AZ15-07 SL



AZ15-07 GN



AZ15-07 BK



Shin Azumi

Edge Clock

An aluminum clock designed by Shin and Tomoko AZUMI playing active based in London. The clock is characterized the rich quality by a built-in molding of aluminum designed to be simple and powerful. A sharp impression is given, harmonized completely with the texture of the aluminum and the index which is polished carefully. Since its release in 2001, the Edge Clock enjoyed stable popularity and has been featured by JIDA design museum selection vol.17, and became highly valued. 15 years after the release, we have reconsidered color variations to make the product more attractive and black color was added.

AZ-0115

φ350×d55mm / 1,510g / Aluminum / Sweep Second

AZ-0116

φ180×d40mm / 530g / Aluminum / Sweep Second
With Stand



AZ-0115 AL



AZ-0115 WH



AZ-0115 BK



AZ-0116 AL



AZ-0116 WH



AZ-0116 BK



Yota Kakuda

Lines Clock

YK16-02 L $\phi 305 \times d48 \text{mm}$ / 750g / Plywood, Glass / Sweep Second

YK16-02 M $\phi 254 \times d48 \text{mm}$ / 580g / Plywood, Glass / Sweep Second



YK16-02 L



YK16-02 M

Yota Kakuda

Numbers Clock

YK16-03 L $\phi 305 \times d48 \text{mm}$ / 750g / Plywood, Glass / Sweep Second

YK16-03 M $\phi 254 \times d48 \text{mm}$ / 580g / Plywood, Glass / Sweep Second



YK16-03 L



YK16-03 M

These clocks are made of circular plywood in the same way as the tambourine frames that Lemnos has utilized in many of its previous clocks.

Numbers Clock employs largish numbers that are extremely easy to see with this frame. Lines Clock utilizes longer hour and minute hands, with the intention of attributing them with the same level of presence as the numbers on the face. With both, the overall balance and the details were decided on with a premium placed on ease of visibility.



Yota Kakuda

Clock A

These clocks have a unique function which allows them to be instantly recognizable and easy to read due to the size and location of the numbers, even though the overall clock size remains small.



Photography by FUSE Inc.

YK14-05

$\phi 220 \times d53 \text{mm}$ / 590g / Ash, Glass / Sweep Second



YK14-05 NT



YK14-05 BK

YK15-03

$\phi 144 \times d53 \text{mm}$ / 290g

Ash, ABS resin, Glass

Sweep Second

With Stand (NT:Red, BK:Black)



YK15-03 BK

Yota Kakuda

Clock A Small

“Clock A Small” can be used as a wall clock or table clock with wire stand. A red stand comes with the natural wooden clock, and a black stand is for the black clock.



YK15-03 NT



NL14-11 GY



NL14-11 WH



NL14-11 BG

designed by 



nendo

dandelion

A wall clock that tells the time using numbers of seed heads on the dandelion clocks, rather than numerals. It alludes to time flowing onward like seed heads dancing lightly upon the wind.



NL14-11

φ290×d40mm / 580g / ABS resin



GOOD
DESIGN



Design
for
Asia
Awards
2016

Takenobu Igarashi

eki clock

Takenobu Igarashi is the designer behind the “Big Clock of Stars” which hangs on the outer wall of Sapporo Station in Hokkaido Japan since 2003. He has also designed another clock on both east and west concourses of the same station. The clock has double-faced dials in black and white and the clock numbers half below are designed in a way for easy reading from the ground. This new clock was introduced with its design direction based on the Sapporo Station Clocks.

The clock has a beautifully designed dial with original number types, and its frame is made with aluminum sand casting and lathing. The distance between its dial and glass is minimized. It truly is a design wall clock in its ultimate simplicity.

Good Design Award 2006 (Japan)

Design for Asia Awards 2016 - Merit (Hong Kong)

TIL16-01

φ256×d40mm / 700g / Aluminum, Glass



TIL16-01 BK



TIL16-01 WH



Riki Watanabe

RIKI CLOCK

RIKI CLOCK features twelve figures which are slightly bigger and needles which are in splendid harmony with the length and thickness. We consider ease of reading important in basic clock design, and we always aim that the cost, performance, and design be simple & light. The frame body of plywood is made by skillful techniques of handicraft manufacturing, expressed by the precise circular shape and beautiful finish.

Good Design Award 2004 (Japan)

WR-0312 L / WR-0401 L

φ354×d48mm / 950g / Plywood, Glass

WR-0312 S / WR-0401 S

φ203×d45mm / 410g / Plywood, Glass

Sweep Second (WR-0312 S)



WR-0312 L



WR-0401 L



WR-0312 S



WR-0401 S

Riki Watanabe

Chiisana Tokei - 小さな時計 -

This small wall clock emerged as a leader in personal clocks in 1970. It was an epoch-making design compared to the common clocks of those days which were over-decorated and large-sized. Now, it has been reproduced as a model by Riki Watanabe, made from a new mold with a reviewed design which preserves the Chiisana Tokei's atmosphere by maintaining features such as the size, the relief lettering, and the needle stopper.



WR07-15 IV



WR07-15 RE



WR07-15 OR



WR07-15 LBL



WR07-15 BL



WR07-15 SL



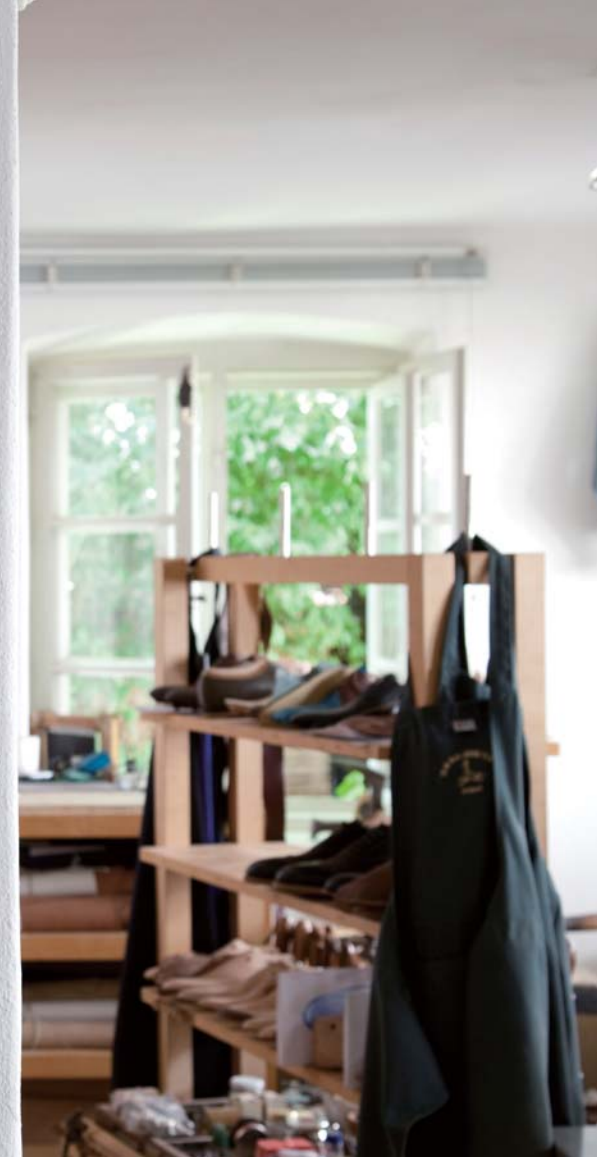
WR07-15 GD

WR07-15

φ122×d72mm / 320g / Steel, ABS resin, Glass

With Stand





Riki Watanabe

RIKI STEEL CLOCK

RIKI STEEL CLOCK is a beautiful clock based on black and white colors. There are two different styles. One features a stick index arranged around an extra-fine needle with exquisite balance on the dial plate to be simple & delicate. The other type features a numerical index with high visibility using twelve figures which are slightly bigger and needles which have splendid harmony with the length & thickness of the numbers.

They are excellent pieces produced with fine details such as the subtle matte painting of the frame body, and the second hand is the same color as the clock board.

WR08-24 / WR08-25

φ204×d60mm / 610g / Steel, ABS resin, Glass
Sweep Second



WR08-24 WH



WR08-24 BK



WR08-25 WH



WR08-25 BK

Riki Watanabe

Copper Clock - 銅の時計 -

In commemoration of the one-hundredth birthday of Riki Watanabe, we manufactured two kinds of beloved clocks that were designed by him. They feature pure copper frames since this was the metal he held most dear. We became even fonder of copper after introducing bare copper sheets to the interior design at Brilliant, the main bar at Keio Plaza Hotel, for the first time. We produced a lot of trial products and pursued possibilities for different designs of clock. Indulge yourself in the pure and alluring beauty of the clock.

WR11-04 φ204×d60mm / 630g / Pure copper, ABS resin, Glass / Sweep Second

WR11-05 φ122×d72mm / 340g / Pure copper, ABS resin, Glass / With Stand



WR11-04



WR11-05





AWATSUJI design

GUGU

GUGU represents a bold new style, featuring radically extended radial lines on a clock face that displays only oversized, even numbers. The aluminum frame adds a sharp, modern design accent.

AWATSUJI design

SOSO

SOSO features a clean design, bringing the numbers on the clock face closer to the center, leaving a bold margin around the outside. The hour hand in white is a bright contrast against the natural shades of the face for a wall clock that fits in all situations.



AWA13-06

φ254×d50mm / 580g / Plywood, Glass / Sweep Second



AWA13-02
φ256×d46mm / 745g
Aluminum, Glass



AWA13-02 SL



AWA13-02 WH



AWA13-02 BK



AWA13-06 OR



AWA13-06 GY



AWA13-06 GN



AWA13-06 BL



Naoki Terada

CARVED COLORED

This "CARVED COLORED" Is a new variation of "CARVED" series, released in 2010 and winning the Good Design Award in the year. By adding color, the combination of its flat face and carved letters looks like color gradation. Although its design is as minimal as possible, the clock still gives color accent in your space. This clock is available in four soft colors: orange, green, blue and grey.

Good Design Award 2010 (Japan)



NTL16-06 OR



NTL16-06 GN



NTL16-06 BL



NTL16-06 GY



NTL16-07 OR



NTL16-07 GN



NTL16-07 BL



NTL16-07 GY

NTL16-06

φ240×d42mm / 480g / Special interior material

NTL16-07

φ305×d42mm / 730g / Special interior material

Naoki Terada

CARVED

This clock which gives an impression as if we cut letters out of a clock face by a chisel try to handle with the graphic in the form. The shadows of letters which are carved bring a three-dimensional impression on the clock face and it changes an expression depending on the environment of the neighboring lights. The material of interior decoration and the technical conversion lead to the opportunity of the idea.

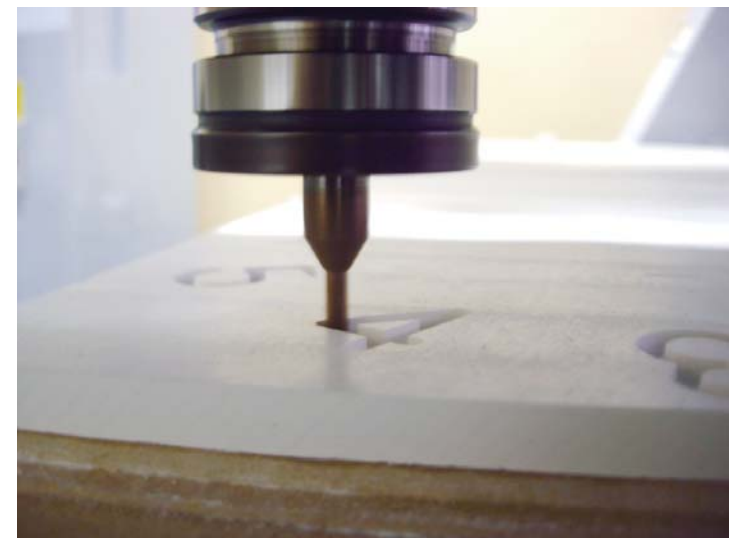
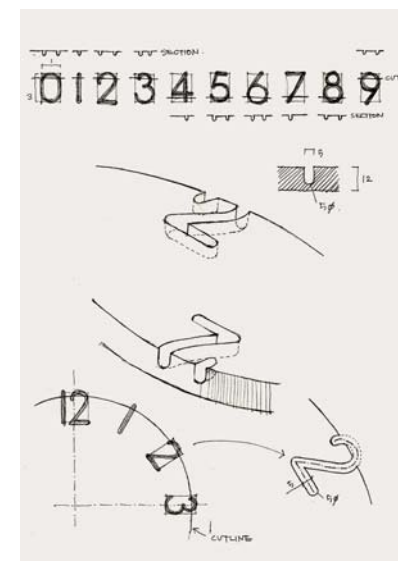
Good Design Award 2010 (Japan)

NTL10-04

φ240×d42mm / 480g / Special interior material

NTL10-19

φ305×d42mm / 730g / Special interior material



NTL10-04 A
Arabic



NTL10-04 B
Roman



NTL10-19 A
Arabic



NTL10-19 B
Roman

Naoki Terada

CARVED II

We pushed the technique of carving numbers into and painting the clock face, as used in CARVED, to the limit. The result is CARVED II. The letters carved into the clock face are only 2mm in width. The smart fonts, which don't look like numbers at a glance, give a sharp and clean impression.

Good Design Award 2014 (Japan)

NTL13-10

φ340×d42mm / 750g / Special interior material
Sweep Second



NTL13-10 WH



NTL13-10 BK



photos by Koji Fukuzaki

**fun pun
clock**®

Yoko Dobashi

fun pun clock

YD14-08 L φ354×d48mm / 970g
Plywood, Glass / Step Second

YD14-08 M φ305×d48mm / 725g
Plywood, Glass / Step Second



YD14-08 L



YD14-08 M

An analog clock that motivates children who cannot read a clock desire to learn how to do so.

Based on the concept of “An analog clock that motivates children who cannot read a clock”, the clock was developed by a female designer who is also a mother, in cooperation with Ms. Misa Sakurai, a senior researcher of the Japan Montessori Research Institute. This clock is simple, made of beautiful materials, and matches any interior design. Fun pun clock is well designed so as to promote understanding of minutes, hours and time for children whose interest in clocks begin to grow from the standpoint of Montessori education. When your child becomes interested in clocks, try reading the time aloud together and enjoy educational communication.



YD15-01 LBL



YD15-01 RE



YD15-01 YE



YD15-01 GN

with color!

Yoko Dobashi

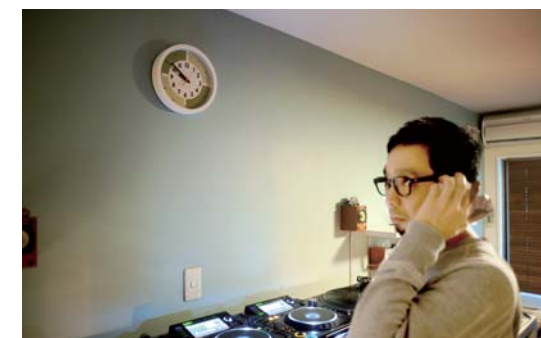
fun pun clock with color !

YD15-01

φ248×d44mm / 660g / ABS resin, Glass / Sweep Second

An analog clock helping you manage your time by its colorful design.

Based on the concept of “An analog clock that helps you manage your time by its colorful design”, the clock leads children to manage their own schedule while optimizing the analog clock to resemble pie chart, using colors effectively and dividing an hour into four quarters. One quarter = 15 minutes is a section of time, so the end of each segment (“0” “15” “30” “45”) has thick white lines. It symbolizes the beginning, like a white canvas to start over again. The combinations of four colors were carefully chosen from thousands of color samples by mixing 12 kinds of pigment with the help of an interior paint maker from COLOR WORKS Inc. The design of the clock goes well with chic as well as casual & playful interiors.



Yuichi Nara

MIKI

NY12-06

φ148×d62mm / 420g
Japanese zelkova, Glass
Sweep Second
With Stand



The zelkova is a tree with a beautiful wood grain.

MIKI is a clock cut from the thick trunk of the zelkova tree. Zelkova wood is a hard and strong material, which features a number of ring markings. The varied appearances of these trees indicate their age and the type of atmosphere they grew in. The surface of the material was carefully polished and finished with nature-based oil paint that is gentle on human skin. Touch it directly to experience its wooden warmth. This can also be used as a table clock with a special stand.



Yuichi Nara

MONO Clock

This is a wall clock with a clear black and white design, like a piano keyboard. The frame is made from aluminum casting, using a specialist technique, and is produced in a casting production center in Takaoka city, Toyama prefecture. It gives off a luster like a mirror, with each one carefully polished by a craftsman.



LC10-20 A WH



LC10-20 A BK



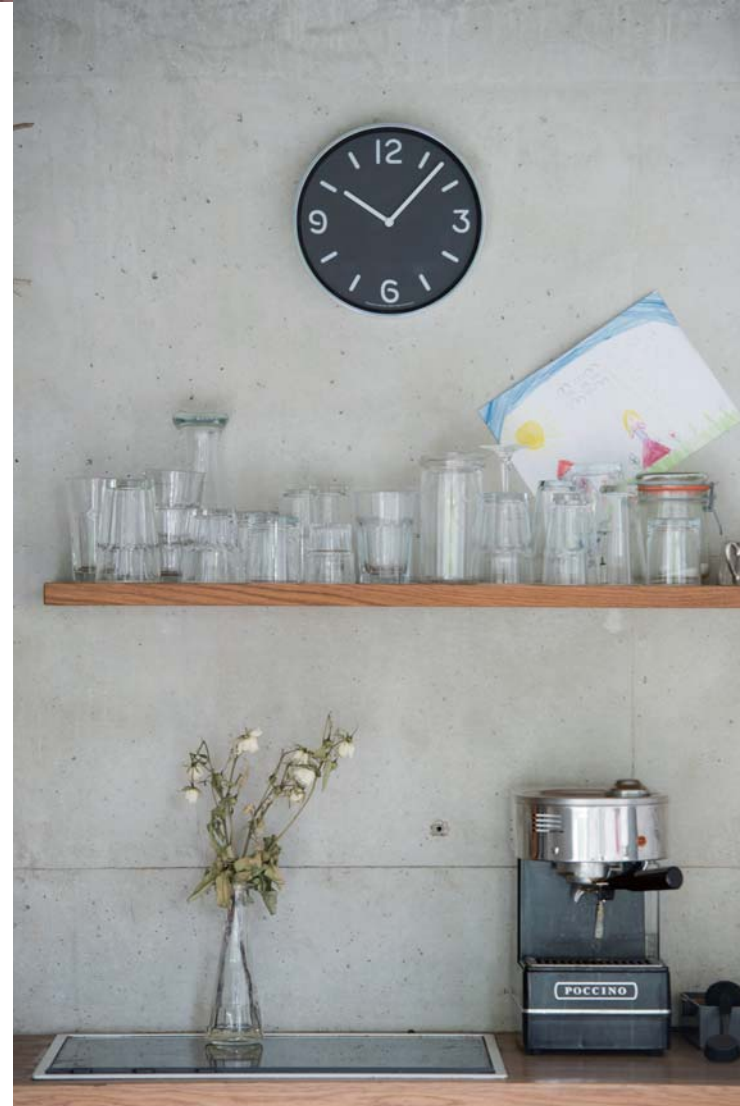
LC10-20 B WH



LC10-20 B BK

LC10-20

φ256×d46mm / 815g / Aluminum, Glass



Yuichi Nara

THOMSON

As well as a round frame for Lemnos plywood clock which was produced as a frame for a tambourine, THOMSON is a wall clock for all of the parts of which wooden plates are used and designed with the intention of telling the time with wooden texture. Shadows in the soft figures of numbers, the numbers are like designed ones using a Thomson-type technique that is often used in the process of punching paper or wood, create an expression of a three-dimensional impression and it improves the clock's important function, visibility,

LC10-26

φ254×d55mm / 680g / Plywood, Glass



LC10-26 NT



LC10-26 BW



Yuichi Nara
CUCU

CUCU is a clock that tells the time with a lovely cuckoo sound and the murmur of a brook. Shaped like a simple birdhouse, CUCU can be used as either a wall or table clock. Choose between four different types: Natural, Brown with Japanese ash wood grain, Modern White, and obsidian Black that retains the texture of the wood grain.



LC10-16

w182×h254×d107mm / 1,420g / Ash / Cuckoo clock / Two-step volume control with light sensor



LC10-16 NT



LC10-16 DBW



LC10-16 BK

Yuichi Nara

PRATO

PRATO means a lawn or grass in Italian. The clock index, like grass growing from the clock face in tufts, was produced using a special printing method called a flocking finish. The combination of natural plywood and its soft flocky texture produces an expressive clock. The soft color of the clock suits other fabric and furniture.



NY12-07

φ295×d35mm / 365g / Plywood



NY12-07 OR



NY12-07 GN



NY12-07 BW



Yuichi Nara

Keisoudo no Tokei - 珪藻土の時計 -

Keisoudo no Tokei is made from diatomaceous earth and produced using a traditional Japanese plastering technique. The design maximizes the feature and atmosphere of the diatomaceous earth, which brings us warmth when touched. It suits a natural-material interior not only for a Japanese “Wa” atmosphere with wood or plaster, but also a modern-taste atmosphere. SiO₂, the logo displayed on the clock, is the chemical symbol of the main component of diatomaceous earth.

Golden Pin Design Award 2016 (Taiwan)

LC11-08

φ256×d36mm / 805g
Diatomaceous Earth



LC11-08 PK



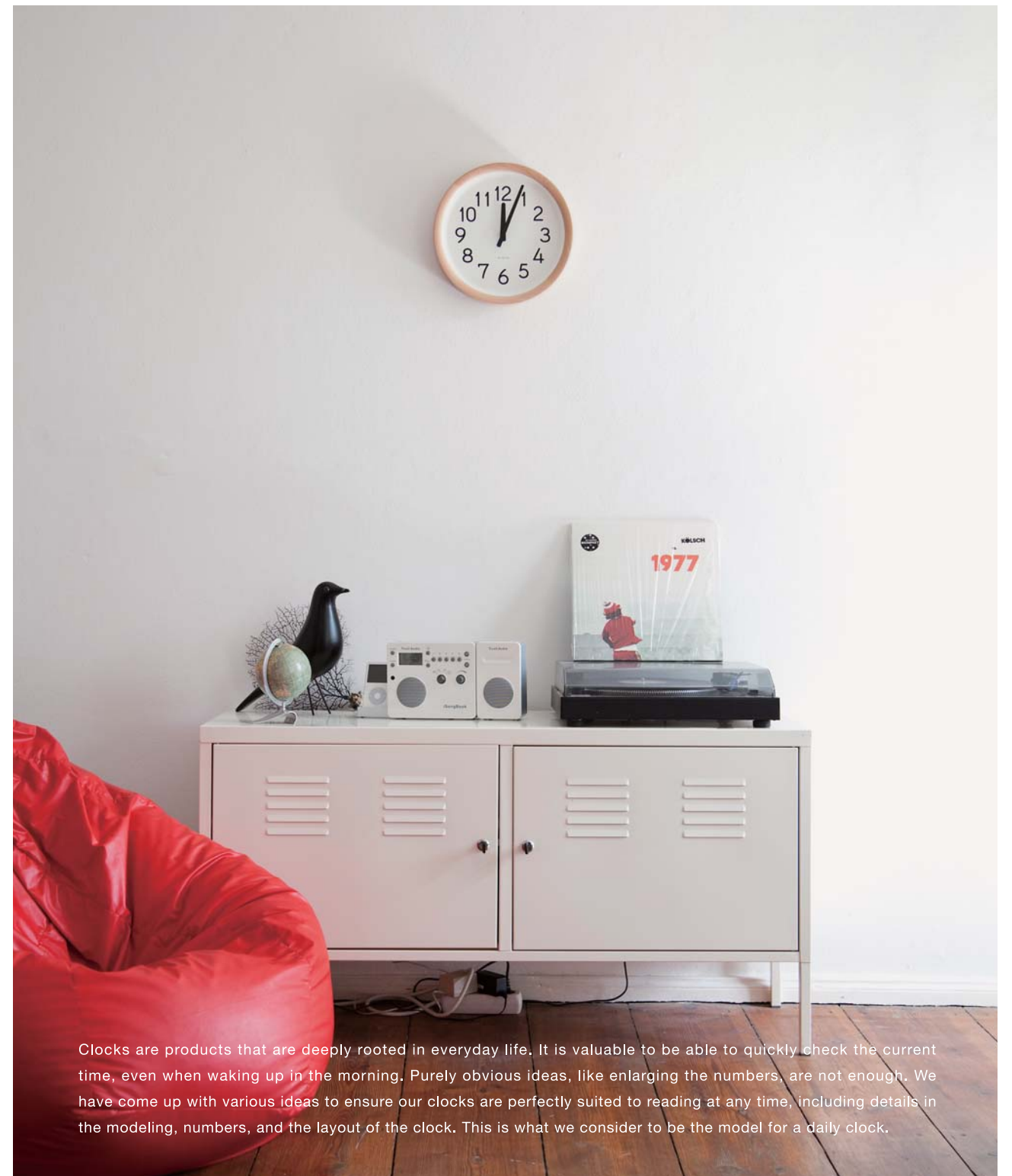
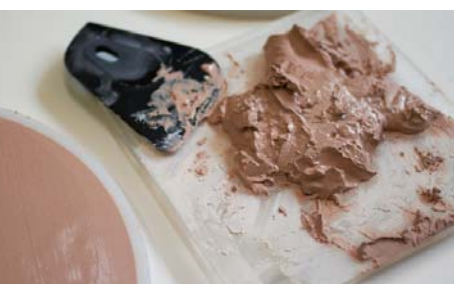
LC11-08 WH



LC11-08 GN



LC11-08 YE



Clocks are products that are deeply rooted in everyday life. It is valuable to be able to quickly check the current time, even when waking up in the morning. Purely obvious ideas, like enlarging the numbers, are not enough. We have come up with various ideas to ensure our clocks are perfectly suited to reading at any time, including details in the modeling, numbers, and the layout of the clock. This is what we consider to be the model for a daily clock.

PINTO

Day To Day Clock

PIL12-10

φ298×d46mm / 960g / Beech, ABS resin, Glass



PIL12-10 NT



PIL12-10 BW

Lemnos Design Group

Campagne

PC10-24

φ294×d46mm / 780g / Beech, Glass



PC10-24 NT



PC10-24 BW

"Campagne" means "the countryside" in French. The clock was designed reflecting the image of rich nature scene with time flowing slowly.

The material of beautiful beech wood and the form of clock hands having gentle curve give the clock a comfortable impression.



The Plywood series are core Lemnos items. The clocks are individually produced in Japan by skilled craftsmen. High-quality plywood featuring a beautiful basswood texture creates a sophisticated and anonymous clock design. The clock's charm is its simplicity that is well suited to a range of settings.

moritoyoshi

Plywood clock

Good Design Long Life Design Award 2013 (Japan)

T1-017(1)

φ305×d50mm / 740g / Plywood, Glass / Sweep Second



T1-017(1)

Lemnos Design Group

TRiO

A natural white-plywood clock with a built-in thermometer and hygrometer. Its beauty lies in its range of colors that are well suited to both a living room and a children's room.

PC10-22

φ254×d51mm / 615g / Plywood, Glass

Sweep Second

Thermometer & Hygrometer



PC10-22 GY



PC10-22 WH



moritoyoshi

North clock

This design combines a simple and modern font with domed glass. The bold and vivid colors are ideal for different settings, from a house to an office.

T1-0117

φ320×d50mm / 825g / ABS resin, Glass / Sweep Second



T1-0117 WH



T1-0117 RE



T1-0117 GY



T1-0117 BU

moritoyoshi

MIZUIRO

This attractive clock has a casual and high-grade style and is designed to be easy to read while enabling an appreciation of its casual beauty without getting bored. The clock's light blue hands accentuate the design.

LC07-06

φ200×d42mm / 420g / Aluminum, Glass / Step Second
With Stand



LC07-06 WH



LC07-06 GY





A comfortable clock for a natural taste, with a built-in thermometer and hygrometer. The clock's simple form, with a beautiful ash grain, creates a noble atmosphere to which the miter joints add good accent. The more often you use the clock, the more charming its oil paint finish becomes.

Lemnos Design Group

FRAME

LC13-14

w200×h110×d46mm / 390g / White ash, Glass
Thermometer & Hygrometer



LC13-14 BW



LC13-14 NT

KC10-14

Lemnos Design Group

MUKU desk clock

MUKU desk clock is built with pure walnut, repurposed material left over from the manufacturing of other clock frames. The result is a table clock that is pure, unique and natural, with each clock having its own individual characteristics, from dents in the branding to the pattern of the wood grain. The same texture of wood grain does not exist with two. MUKU desk clock gives you deep tasteful feeling.

LC12-05

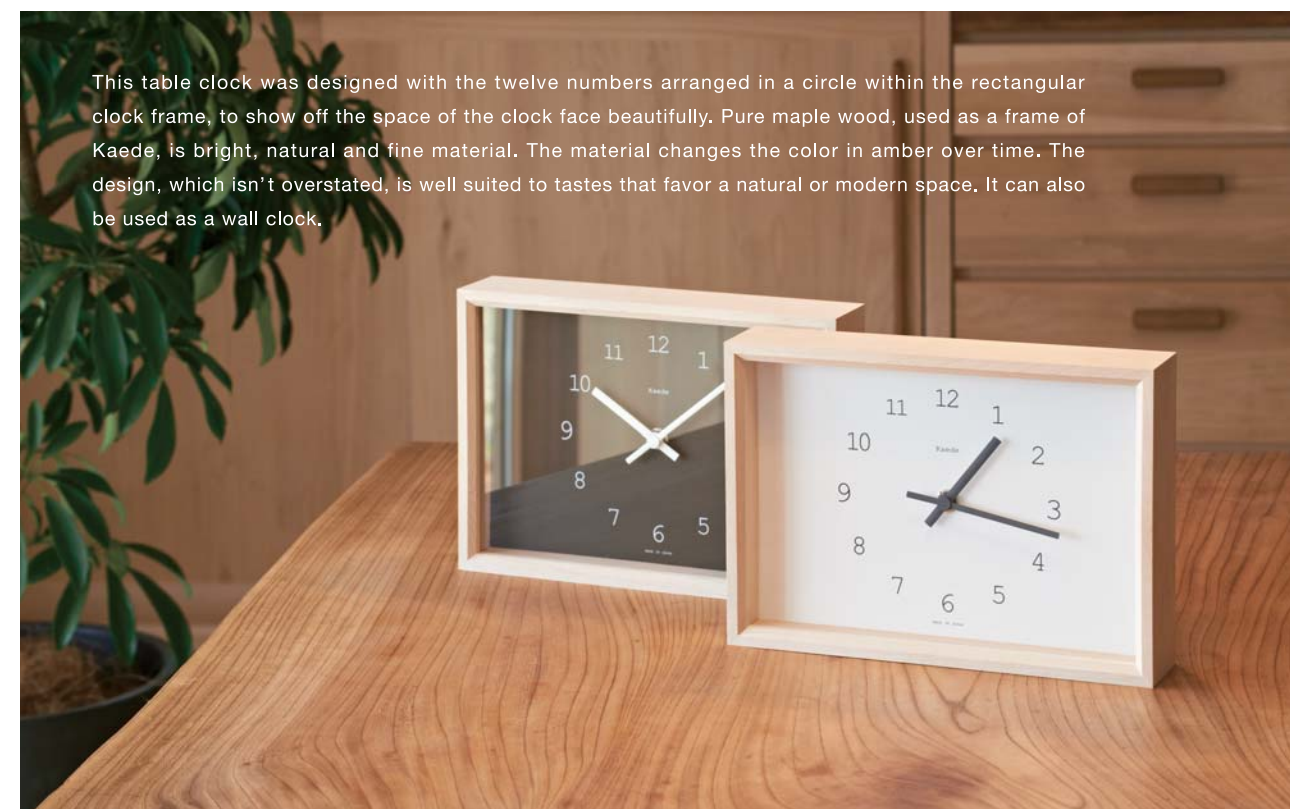
w86×h86×d47mm
AD : 125g Alder
BN : 165g Beech



LC12-05 AD



LC12-05 BN



This table clock was designed with the twelve numbers arranged in a circle within the rectangular clock frame, to show off the space of the clock face beautifully. Pure maple wood, used as a frame of Kaede, is bright, natural and fine material. The material changes the color in amber over time. The design, which isn't overstated, is well suited to tastes that favor a natural or modern space. It can also be used as a wall clock.

Yuichi Nara

Kaede

NY14-02

w242×h172×d50mm / 635g
Hard maple, Glass



NY14-02 NT



NY14-02 BW

Yuichi Nara

Yokan

This clock with a thermometer and hygrometer has strong features and the appearance of having just been hewn in a square lump from a tree. With luxury in mind, we used pure wood for the frame finished with a coating of soft-feeling plant oil, making it possible to directly feel the warmth of the tree. It has a clear and simple design, with the thermometer and hygrometer being highly visible and easy to read.

LC11-06

w300×h109×d50mm / 500g
NT : Ash, Glass / BW : Walnut, Glass
Thermometer & Hygrometer



LC11-06 NT



LC11-06 BW




reddot design award
winner 2010



KC10-12 / KC10-13 / KC10-14
w116×h113×d50mm / 290g / Ceramic / Sweep Second

Kanaé Tsukamoto

DROPS DRAW THE EXISTANCE <KC10-12>

When Kanae Tsukamoto, the designer of this clock, noticed the shape made in the ground by a falling raindrop, she became aware of it as a gravitational form. Gravity works and can be felt directly, yet it can't be seen or touched. She created this design as the image of gravity acting incidentally on the form of another object.

TENSION <KC10-13>

Bringing out contradictory factors within the elements of a certain character creates a sense of tension. We expressed such an idea in a form.

FIREWORKS <KC10-14>

After first developing a shape resembling three-dimensional lace, we eventually settled on a simple form on which you can accurately read the time at a glance. It ended up as a contrasting solid with a shape resembling a firework going up in the night sky as a point of wit.

reddot design award winner 2010 (Germany)



moritoyoshi

STOCK

A tissue case named STOCK featuring sides made from a single plywood plate. STOCK can store two compact-sized tissue boxes and is the result of our elaboration considering practical use. Above all, the attraction of the tissue case is its simple and calm minimal design.

Good Design Award 2004 (Japan)

Da-05

w280×h120×d135mm / 510g / Plywood, MDF



Lemnos Design Group

BICOLORE

Carefully produced by a skillful craftsman in Japan, this is a tissue case with a beautiful texture. "BICOLORE" means two colors. The lid has a two-tone color. You can match the color of the lid to your room's interior by placing it either face up or face down. The case's gentle hue and tender appearance is charming.

TB11-19

w265×h78×d135mm / 400g / Plywood, MDF



ALARM CLOCK



AWATSUJI design

JlJl alarm

JlJl alarm features the same sharp design and clean lines of GUGU with a more traditional clock face that includes all numbers, 1 through 12. The scales of the clock dial were increased on this compact design for a small clock that delivers a big impact. (Alarm clock with electric buzzer)

AWA13-04

w100×h107×d58mm / 355g / Aluminum, Glass
Step Second



AWA13-04 BK



AWA13-04 SL

Riki Watanabe

RIKI ALARM CLOCK

RIKI ALARM CLOCK is beautifully harmonized with the dial plate using twelve figures to be high visibility and the simple form. The wooden and round frame body makes an impression to be light and soft. Beauty of wood grain is the feature.

WR09-15

w110×h115×d56mm / 240g / Beech, ABS resin, Glass
Sweep Second / Snooze Function, Light



WR09-15 NT



WR09-15 BW



Lemnos Design Group

Nocturne

PA09-10

w108×h113×d48mm / 235g / Alder, ABS resin, Glass
Sweep Second / Snooze Function, Light



PA09-10 NT



PA09-10 BW



Lemnos Design Group

rest

LA13-12 w91×h89×d45mm / 145g / White ash, ABS resin, Glass / Step Second

LA13-13 w70×h70×d42mm / 125g / White ash, ABS resin, Glass / Step Second



LA13-12 NT



LA13-12 BW



LA13-13 NT



LA13-13 BW

TOKYO SHOWROOM



photo Takumi Ota

www.lemnos.jp

TAKATA Lemnos Inc.

info@lemnos.jp

TOKYO SHOWROOM & OFFICE

1F Chat Noir Bunkyo,3-7-14,Otsuka,Bunkyo-ku,Tokyo,112-0012 JAPAN

TEL : (+81)3-5981-8120 FAX : (+81)3-5981-8365

HEADQUARTERS

511,Hayakawa,Takaoka,Toyama,933-0957 JAPAN

TEL : (+81)766-24-5731 FAX : (+81)766-22-8071

